

Fang mich doch!
 Flinkes Lied zu einer Melodie von Leopold Mozart

Text: Sabine Viex

C

Komm her! Komm, fang' mich doch! Wetten, dass Du mich nicht fängst ich

G F C Dm C G C

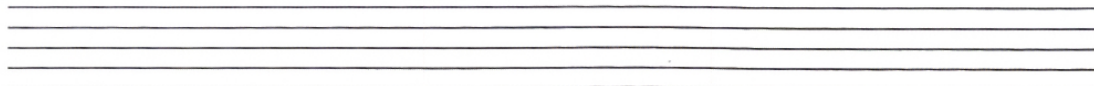
laufe Dir davon! Wi- weia, wi- weia, wiweia, wo! Wi- weia, wi- weia, wi- weia: so!

C (C4) C (C4) C (C4)

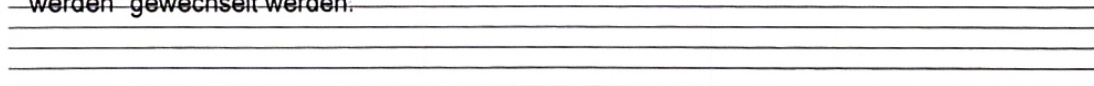
Lauf' ich um die E-cke schnell in das Versteck. Läufst Du um die E-cke....

C (C4) F G7 C

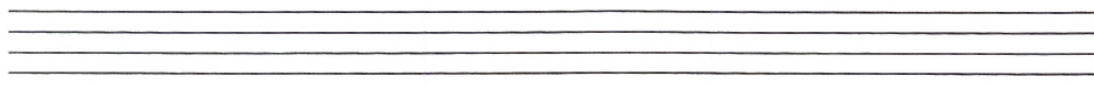
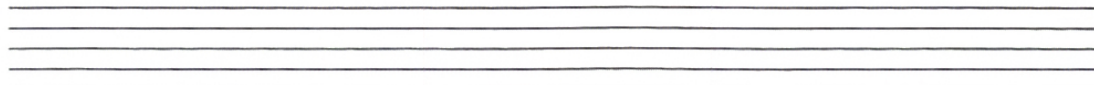
wo ist das Versteck? Wi- weia, wi- weia: weg! Weg!



Zur Musik kann man tatsächlich ein Fangenspiel parallel schalten.
 Die Gruppe singt das Lied und 2 spielen während der Zeit fangen.
 Zu jeder Strophe können die Rollen „Fangen und Gefangen
 werden“ gewechselt werden.



Es existiert ein Klavierstück von Leopold Mozart dazu, welches
 im A- Teil genau zur Melodie passt. Der B-Teil könnte ergänzend
 erklingen- er eignet sich zum Rhythmus mit klatschen.
 Darauf folgt wieder der verkürzte A Teil zum Mitsingen!



Musette

Leopold Mozart
(1719–1787)

A

Allegro

Measures 1-4 of section A. Treble clef, 2/4 time. Measure 1: Treble clef has notes G4 (5), A4 (2), B4 (1), C5 (1). Bass clef has notes G3 (1), B2 (3). Measure 2: Treble clef has notes D5 (3), E5 (2), F5 (3), G5 (2). Bass clef has notes G3 (1), B2 (3). Measure 3: Treble clef has notes A5 (3), B5 (3), C6 (3), D6 (3), E6 (3), F6 (3), G6 (3), A6 (3). Bass clef has notes G3 (1), B2 (3). Measure 4: Treble clef has notes B6 (3), C7 (3), D7 (3), E7 (3), F7 (3), G7 (3), A7 (3), B7 (3). Bass clef has notes G3 (1), B2 (3).

Measures 5-8 of section A. Treble clef, 2/4 time. Measure 5: Treble clef has notes G5 (3), A5 (2), B5 (3), C6 (2), D6 (3), E6 (2), F6 (3), G6 (2). Bass clef has notes G3 (1), B2 (3). Measure 6: Treble clef has notes A6 (3), B6 (2), C7 (3), D7 (2), E7 (3), F7 (2), G7 (3), A7 (2). Bass clef has notes G3 (1), B2 (3). Measure 7: Treble clef has notes B7 (3), C8 (2), D8 (3), E8 (2), F8 (3), G8 (2), A8 (3), B8 (2). Bass clef has notes G3 (1), B2 (3). Measure 8: Treble clef has notes C9 (3), D9 (2), E9 (3), F9 (2), G9 (3), A9 (2), B9 (3), C10 (2). Bass clef has notes G3 (1), B2 (3).

Measures 9-14 of section A. Treble clef, 2/4 time. Measure 9: Treble clef has notes G5 (1), A5 (1), B5 (1), C6 (1), D6 (1), E6 (1), F6 (1), G6 (1). Bass clef has notes G3 (1), B2 (5). Measure 10: Treble clef has notes A6 (1), B6 (1), C7 (1), D7 (1), E7 (1), F7 (1), G7 (1), A7 (1). Bass clef has notes G3 (1), B2 (5). Measure 11: Treble clef has notes B7 (1), C8 (1), D8 (1), E8 (1), F8 (1), G8 (1), A8 (1), B8 (1). Bass clef has notes G3 (1), B2 (5). Measure 12: Treble clef has notes C9 (1), D9 (1), E9 (1), F9 (1), G9 (1), A9 (1), B9 (1), C10 (1). Bass clef has notes G3 (1), B2 (5). Measure 13: Treble clef has notes D9 (1), E9 (1), F9 (1), G9 (1), A9 (1), B9 (1), C10 (1), D10 (1). Bass clef has notes G3 (1), B2 (5). Measure 14: Treble clef has notes E9 (1), F9 (1), G9 (1), A9 (1), B9 (1), C10 (1), D10 (1), E10 (1). Bass clef has notes G3 (1), B2 (5). *f* in measure 9, *p* in measure 11, *cresc.* in measure 13. *Fine* in measure 14.

B

Measures 15-20 of section B. Treble clef, 2/4 time. Measure 15: Treble clef has notes G4 (5), A4 (3), B4 (5), C5 (3), D5 (5), E5 (3), F5 (5), G5 (3). Bass clef has notes G3 (1), B2 (2). Measure 16: Treble clef has notes A4 (5), B4 (3), C5 (5), D5 (3), E5 (5), F5 (3), G5 (5), A5 (3). Bass clef has notes G3 (1), B2 (2). Measure 17: Treble clef has notes B4 (5), C5 (3), D5 (5), E5 (3), F5 (5), G5 (3), A5 (5), B5 (3). Bass clef has notes G3 (1), B2 (2). Measure 18: Treble clef has notes C5 (5), D5 (3), E5 (5), F5 (3), G5 (5), A5 (3), B5 (5), C6 (3). Bass clef has notes G3 (1), B2 (2). Measure 19: Treble clef has notes D5 (5), E5 (3), F5 (5), G5 (3), A5 (5), B5 (3), C6 (5), D6 (3). Bass clef has notes G3 (1), B2 (2). Measure 20: Treble clef has notes E5 (5), F5 (3), G5 (5), A5 (3), B5 (5), C6 (3), D6 (5), E6 (3). Bass clef has notes G3 (1), B2 (2). *mf* in measure 15, *cresc.* in measure 18.

Measures 21-24 of section B. Treble clef, 2/4 time. Measure 21: Treble clef has notes G4 (5), A4 (2), B4 (1), C5 (1), D5 (3), E5 (2), F5 (3), G5 (2). Bass clef has notes G3 (1), B2 (3). Measure 22: Treble clef has notes A4 (5), B4 (2), C5 (1), D5 (1), E5 (3), F5 (2), G5 (3), A5 (2). Bass clef has notes G3 (1), B2 (3). Measure 23: Treble clef has notes B4 (5), C5 (2), D5 (1), E5 (1), F5 (3), G5 (2), A5 (3), B5 (2). Bass clef has notes G3 (1), B2 (3). Measure 24: Treble clef has notes C5 (5), D5 (2), E5 (1), F5 (1), G5 (3), A5 (2), B5 (3), C6 (2). Bass clef has notes G3 (1), B2 (3).

Measures 25-28 of section B. Treble clef, 2/4 time. Measure 25: Treble clef has notes G4 (3), A4 (2), B4 (3), C5 (2), D5 (2), E5 (2), F5 (2), G5 (2). Bass clef has notes G3 (1), B2 (3). Measure 26: Treble clef has notes A4 (3), B4 (2), C5 (3), D5 (2), E5 (2), F5 (2), G5 (2), A5 (2). Bass clef has notes G3 (1), B2 (3). Measure 27: Treble clef has notes B4 (3), C5 (2), D5 (3), E5 (2), F5 (2), G5 (2), A5 (2), B5 (2). Bass clef has notes G3 (1), B2 (3). Measure 28: Treble clef has notes C5 (3), D5 (2), E5 (3), F5 (2), G5 (2), A5 (2), B5 (2), C6 (2). Bass clef has notes G3 (1), B2 (3). *dim.* in measure 25, *p* in measure 27.

da capo al Fine